

Figure 1. M16C/6x SKP

1. M16C/6x StarterKit Plus Software Install

- a) Please insert the enclosed CD into your computer's CD-ROM drive. The CD should auto-start, displaying the SKP Picker Install Screen. Follow the directions in the installation windows to install the Renesas tools.
 - i) If the installation screen does not appear, please browse the CD root folder and double-click on "SKP-Installer.exe".
 - Do not plug the In-Circuit Debugger into your USB port until instructed to in Section 2, USB Driver Installation.
 - The installation process requires a valid SKP serial number. Locate the label on the PC board or on the side of your box.
 - During the installation process, you may be prompted to restart your computer. Do not restart until the SKP installer has completed installation of all of the software items.
 - During the SKP install, dialog boxes will appear asking if you would like to install the development tools or not. The development tools will allow you to evaluate the different features of the M16C/6x MCU and the software development environment (debugger, compiler, linker, etc...).

2. USB Driver Installation

You need to install the driver for the RTA-FoUSB-MON In-Circuit Debugger (ICD) before you can use it. First, verify that the Target/Bus Power Mode switch is in the USB position.

Next, connect one end of the mini USB cable into the ICD and the other end into your PC's USB port. The red "Power" LED on the ICD will light up and the yellow "Status" LED will blink about 2-3 times per second.

If you are running Windows 98, ME or 2000, no intervention by the user is needed. When the ICD is plugged in, Windows automatically attaches the correct driver for your device and it is ready to use.

If you are running Windows XP, the first time a FoUSB device is plugged into a different USB port on the PC, the Windows XP "Found New Hardware Wizard" window will appear. Select the default option "Install the software automatically (recommended)".

Windows will then begin installing the USB driver. Another screen may appear stating that this driver has not been XP certified by Microsoft because we did not participate in Microsoft XP driver certification. Click the "Continue Anyway" button.

Your driver is now installed. Click Finish to close the wizard.

The driver files (.sys and .inf) are always located under the FoUSB install directory (For example: C:\MTOOL\FoUSB\USB Drivers\) in case you are have trouble with the automatic driver installer.

NOTE: If you have problems installing the drivers or your PC will not recognize the ICD, please see the "Troubleshooting" section of the RTA-FoUSB-MON user's manual for details.

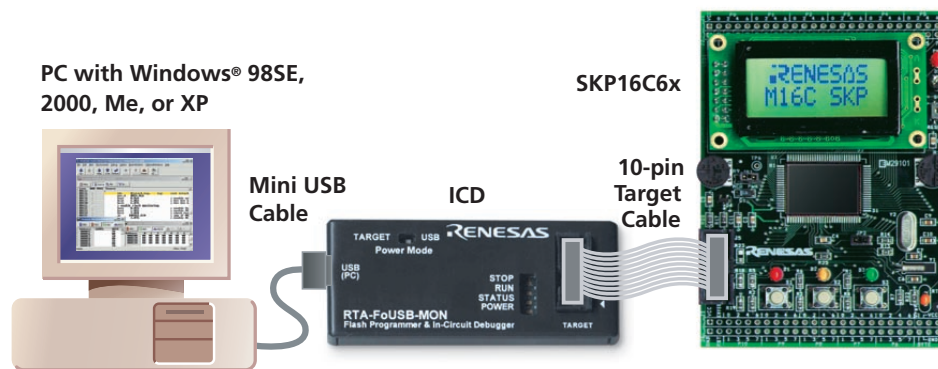


Figure 2. M16C/6x SKP System Connectivity


3. Demo Program

The following instructions are specific for the SKP16C62P kit. Substitute 6N in place of 62P for the SKP16C6N kit. The kit ships with a demo program that runs on the board when connected to the ICD (RTA-FoUSB-MON).

- a) If not already done in step 2a), plug one end of the USB cable into the RTA-FoUSB-MON and the other into a USB socket on your PC.
- b) Connect the RTA-FoUSB-MON to the SKP board using the supplied ribbon cable. The power light of the board should come on. If the power light on the SKP board does not come on, check the Power Mode switch on the RTA-FoUSB-MON and verify that it is set to the “USB” position.
- c) Press the reset switch to run the demo program.
 - The LCD on the board will display a welcome message (adjust LCD contrast as needed). After a few seconds, “RT1: xxxx, AN0: xxxx” will be displayed on the LCD.
 - The LED’s will blink sequentially (back and forth).
 - The LED flash rate is controlled by the Analog Adjust (R16) potentiometer (which is connected to the ADC’s AN0 input). The 10-bit ADC value is also shown on the LCD as AN0.
- d) Turn the Analog Adjust clockwise or counter-clockwise. This alters the flash rate of the LEDs, and increases or decreases the AN0 value shown on the LCD.
- e) Press the pushbutton switches S1, S2, or S3. This will stop the sequential blinking of the LEDs. The LED associated with the pushbutton switch (i.e., S1 – Red LED, S2 – Yellow LED, and S3 – Green LED) will light up.

4. HEW (IDE) Quick-Start

HEW integrates various tools such as the compiler, assembler, debugger, and editor into a common Graphical User Interface. *To learn more on how to use HEW, open the HEW manual navigator on your computer (Start > (All) Programs > Renesas High-performance Embedded Workshop > Manual Navigator).*

- a) Launch HEW from the Start menu (Start > (All) Programs > Renesas High-performance Embedded Workshop > High-performance Embedded Workshop).
- b) In the “Welcome!” dialog box:
 - i) Verify “Create a new project workspace” is selected.
 - ii) Click <OK>.
- c) In the “New Project Workspace” Dialog box:
 - i) Verify the “CPU family” is set to “M16C”.
 - ii) Select “M16C/62P StarterKit Plus” (Figure 3).
 - iii) Enter “skptest62p” for the Workspace Name (the Project Name will auto fill to “skptest62p”).
 - iv) Click <OK>.
- d) On the “StarterKit Plus - Step 1” Window:
 - i) Click <Next>.
- e) On the “StarterKit Plus - Step 2” Window:
 - i) Select “SKP Operational Test”.
 - ii) Click <Finish>.
- f) In the “Project generator information” Window:
 - i) Click <OK>.
- g) Click the “Build” icon, , to compile, assemble and link the project. HEW will look similar to Figure 4.
- h) After ensuring there are no errors, proceed to section 5, KD30 Debugger Quick-Start.

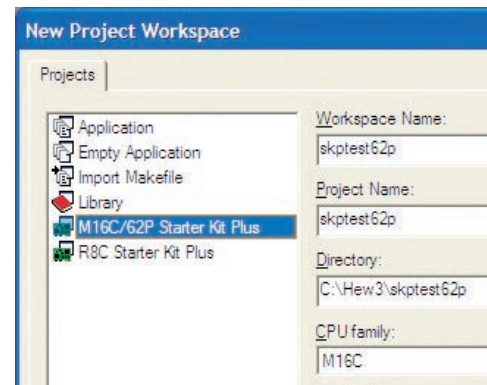


Figure 3. New Project Workspace in HEW

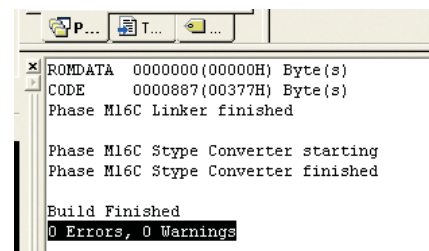


Figure 4. HEW with the skptest62P project compiled

5. KD30 (Debugger) Quick-Start




- a) Connect the SKP to the PC as shown in Figure 2 (described in detail in steps 3a) and 3b) above).
- b) Click on the debugger button  to launch the KD30 debugger from HEW. The “Init” dialog box should open (Figure 5).
- c) The first time you run KD30, you will have to define the target:
 - i) Click <Refer...>.
 - ii) Select MCU as follows using Table 1.
 - Select the group corresponding to the SKP MCU.
 - Select the MCU in the group.
 - iii) Select “USB” and click <OK>.
 - If you get an error, check connectivity.
 - If the message “We should download new firmware” is displayed, click <OK>.
- d) After initialization, the KD30 Program Window will appear and our program, “skptest62p.x30”, is automatically downloaded. The KD30 Program Window should look like Figure 6.
- e) Click the “Go” icon  to start the program. This program is similar to the Demo program, but the LEDs do not blink. The LED’s are off unless any of the user switches are pressed.
- f) Click the “Stop” icon  to halt the program. If you now click the “Go” icon, the program will resume execution from the point it stopped.
- g) Exit KD30 by selecting “File > Exit” from the pull-down menu in KD30.
- h) Exit HEW by selecting “File > Exit” from the pull-down menu in HEW.

Table 1.	
SKP16C62P – M30626FHP	
SKP16C6N – M306N4FG	

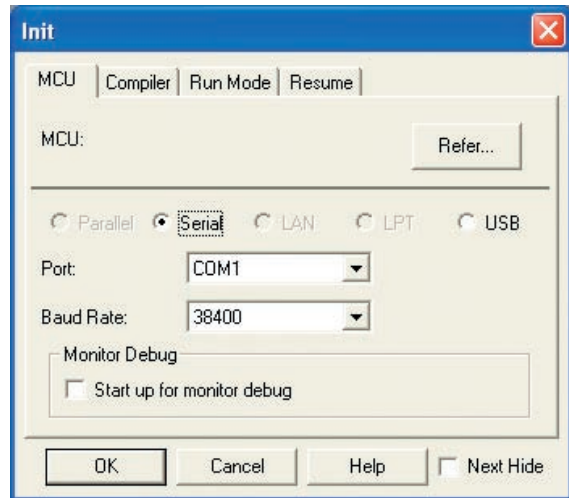


Figure 5. KD30 Init Window

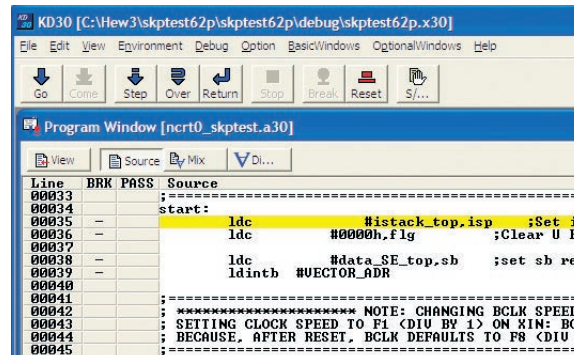


Figure 6. KD30 Program Window after download of skptest62p

6. Downloading (re-loading) the Demo Program using the Flash-over-USB™ Programmer

When we ran KD30, the original demo program was erased and the SKP board was programmed with a different program. You can use the Flash-over-USB™ Programmer to restore the original demo program.

- a) Connect the SKP to the PC. (Described in detail in steps 3a) and 3b) above.)
- b) Start the Flash-over-USB™ Programmer (Start > (All) Programs > RENESAS-TOOLS > Flash-over-USB Ver. x.xx > FoUSB Programmer) or double-click on the “FoUSB” icon on your desktop).
- c) The first time the FoUSB Programmer is run on your computer:
 - i) Click on “Select MCU” button.
 - ii) Select M16C/60 series.
 - iii) Then select the appropriate group and part number as shown in Table 1.
 - iv) Click <OK>.
 - v) Click <OK> as requested until you are returned to the Flash-over-USB main menu.
- d) Each subsequent time the FoUSB Programmer is run:
 - If the “Unlocked” window appears, click <OK>.
- e) Click <Open> when the Flash-Over-USB main menu appears.

- f) Browse to the “C:\MTOOLS\SKP16C62P\Sample_Code\SKP\SKPDemo\Release” folder.
- g) Select “SKPDemo.mot” and click <Open>.
 - i) When the ID Code dialog box appears, click <OK>.
- h) Click <Program> to open the Program Flash window.
- i) Click <Program> to download the demo program.
- j) When the FoUSB dialog box “Program completed Successfully” appears, click <OK> (Figure 7).
- k) Click <Exit> to close Flash-over-USB Programmer and the demo program should start.



Figure 7. Flash-over-USB™ Programmer Main Menu after loading the Demo Code

For more information on how to use the Flash-over-USB™ Programmer, click on the “Help” button.

7. What’s the next step?

After you have completed this quick-start procedure, please review the tutorials that came with the kit. The tutorials will help you understand and jumpstart the software development process using Renesas’ development tools.

You can access the tutorials from the Start Menu (Start > (All) Programs > RENESAS-TOOLS > SKP16C62P > Tutorial 1 – Development Process or Tutorial 2 – Creating a New Project) or from (Start > (All) Programs > RENESAS-TOOLS > SKP16C62P > Document Description), which also lists other documents that come with the SKP. To check for any updates to the StarterKit Plus, use the (Start > (All) Programs > RENESAS-TOOLS > SKP16C62P > Check for Kit Updates) shortcut. This will take you to a kit-specific page on the Renesas website which provides links to any available update downloads.

8. HEW3/C-Compiler

The High-performance Embedded Workshop User Manual will show you how HEW3 integrates various tools such as the compiler, assembler, debugger and editor into a common Graphical User Interface. To access the manual on your computer, go to the HEW menu (Start > (All) Programs > Renesas High-performance Embedded Workshop > Manual Navigator).

The NC30WA v.5.30 Entry version of the C-compiler included in the SKP has no time expiration, but has the following limits:

1. Assembly optimization and debug options are not available.
2. The tool to analyze the inspector or variable is not available.
3. Some advanced tool functions, such as the map viewer, are not available.
4. The software comes without support or warranty.
5. See NC30WA v.5.30 User’s Manual for further details.

If your development needs exceed the above limitations, please go to the following web site, to http://download.renesas.com/eng/mpumcu/evaluation_software/compilers_and_assemblers/m3t_nc30wa/index.html and download the full version (4 calendar month trial).

If you require additional information or assistance, please send an email to techsupport.rta@renesas.com.

© 2004 Renesas Technology America, Inc. Renesas Technology America, Inc. is a wholly owned subsidiary of Renesas Technology Corporation. All trademarks are the property of their respective owners. The information supplied by Renesas Technology America, Inc. is believed to be accurate and reliable, but in no event shall Renesas Technology America, Inc. be liable for any damages whatsoever arising out of the use or inability to use the information or any errors that may appear in this publication. The information is provided as is without any warranties of any kind, either express or implied. Renesas Technology America, Inc. reserves the right, without notice, to make changes to the information or to the design and specifications of its hardware and/or software products. Products subject to availability. Printed in U.S.A.

Renesas Technology America, Inc.
450 Holger Way
San Jose, CA 95134-1368
Phone: 408-382-7500
Fax: 408-382-7501
www.renesas.com

RENESAS